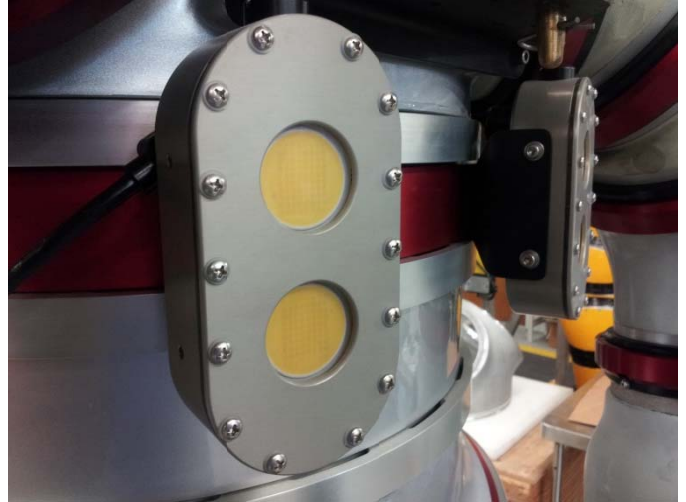




NewtSun 100



The NewtSun 100 replaces and improves upon a 500W halogen or 150W discharge lamp. These lights are virtually impervious to shock, maintenance free, and have a life expectancy of 50,000 hours.

Color temperature and color rendering are also exceptional, competitive with HMI lamps, long considered the benchmark in lighting technologies.

Nuytco's constant current LED driver ensures precisely controlled output and flicker free operation.

Note that the Newtsun 100 is only suitable for use in water.

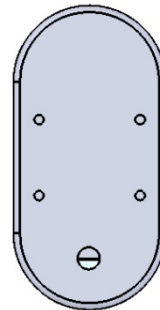
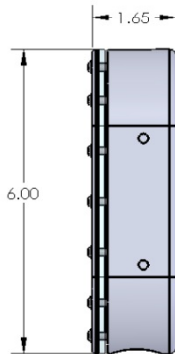
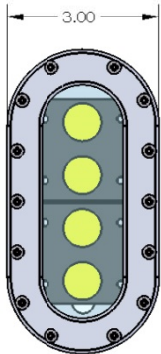
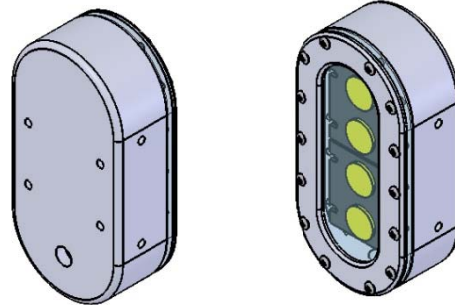
Nuytco Research Ltd

216 East Esplanade, North Vancouver
B.C. V7L 1A3 Canada

Phone: 604 980 6262
Email: nrl@nuytco.com
Web: www.nuytco.com



NewtSun 100



Specifications:

Voltage Input: 190-375 VDC*
Power dissipation: 100W
Luminous Flux: 7280lm
Color Temperature: 5000K
Color rendering (CRI): 80
Beam angle: 120 deg
Depth rating: Full ocean (PBOF)
Air weight: 2.1 lbs.
Water weight: 1.2 lbs.
Bulkhead: SubConn MCBHRA3MAL
Warranty: Lifetime**

*Other input ranges available from 12-400VDC

** warranty does not cover connector

Nuytco Research Ltd

216 East Esplanade, North Vancouver
B.C. V7L 1A3 Canada

Phone: 604 980 6262
Email: nrl@nuytco.com
Web: www.nuytco.com